

# **SMRUTI PATEL**

**Your LOCAL Candidate**



## *Dear Resident*

I'd like to introduce myself to those who don't know me. I live on Loughton Way with my husband Gav and two kids aged nine and two. I work full time as a Principal Regulatory Officer for a Pharmaceutical company. My husband runs his own IT consultancy.

I love living in Buckhurst Hill and I want to preserve its character and heritage which attracted us to move here in the first place. We all know that there is a shortage of affordable housing in the local area but over-development would simply place extra pressure on the local amenities and infrastructure and diminish everyone's quality of life. I will always insist on protecting the green belt.

One of my most rewarding roles is being a community governor at the Buckhurst Hill Community Primary School and I am getting to grips with the governing body's duties and the new curriculum. I am excited to take up this position just as our Conservative county councillor Mrs Valerie Metcalfe has managed to get sixth forms provided in our local schools so there does not have to be any disruption to our children's education at a critical time in their lives.

I support the Parish Council in its relentless efforts to improve amenities in our area. Moving the Parish Council offices to the Library on Queens Road means that the library can be open for an extra two days each week. It is hoped that part of this £50,000 saving will fund a Police Community Support Officer (PCSO) to help tackle anti-social behaviour and crime in Buckhurst Hill.

I have enjoyed helping out with the Parish Councillors at events such as the Tour de France and Christmas celebrations on Queens Road. Now I am keen to get more involved by seeking election to the Parish Council.

I hope you will feel able to support me in the election on Thursday, 7th May.

Yours sincerely,

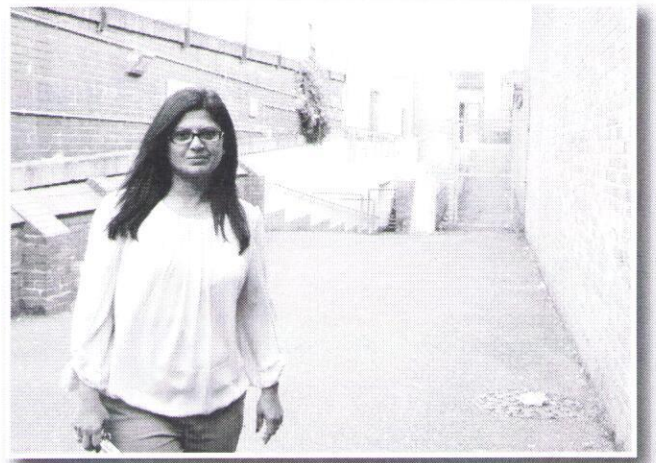
*Smruti Patel*

**Thursday 7 May 2015**



## Access to the Buckhurst Hill station from Albert Road

Being a new mum again, walking around the area with a push chair, has made me very aware of what needs to be improved in the local area. I have been working with our MP, Mrs Eleanor Laing, to put pressure on Transport for London to open the lower entrance to the Buckhurst Hill Station. This would be an enormous help to residents going to the station from our side.



## Crossroads at Loughton Way / Albert Road / Roding Lane

We really do need to have better provision for pedestrians without interrupting the traffic flow too much. Essex Highways have now agreed that the lights can be re-phased to improve this junction. I am very pleased to inform you that the first steps towards implementing these changes are being taken as you read this, although it will still be some time before the works are completed.

**My focus will be entirely on the issues related to the local area that concern you. I promise to:**

- **Work for a safer neighbourhood in which we can bring up our children**
- **Improve community links between the primary school and the local community**
- **Consult with you about our upcoming neighbourhood plan**
- **Be your voice of reason on the Parish Council and keep you posted on all key issues**

**On Thursday 7 May  
VOTE Conservative, VOTE**

**PATEL**



**If you would like to arrange for a postal vote, or have any concerns you want to discuss, please contact me by any of the following means:**

**Email: [smruti4BH@gmail.com](mailto:smruti4BH@gmail.com) Mobile: 07944 006 155**

**or write to 4 Meadow Road, Loughton, Essex IG10 4HX**

**Tel: 020 8508 6608 Email: [jane@eppingforestconservatives.com](mailto:jane@eppingforestconservatives.com)**